

RALLY GUIDE 1



Attention! It's not official, but only an informative document.

TABLE OF CONTENTS

I. INVITE THE “RALLY ŽEMAITIJA 2017”	3
II. CONTACT INFORMATION	6
ADDRESS AND CONTACTS OF THE ORGANIZER:.....	6
OFFICIALS OF THE RALLY	6
RALLY HQ, PRESS CENTRE AND SERVICE	6
III. PROGRAM AND IMPORTANT DATES	7
IV. CLASSIFICATIONS AND ENTRY FEES.....	8
V. SERVICE	9
VI. TIRES AND FUEL	10
VII. TICKETS AND PERMISSIONS	10
VIII. HOTEL ACCOMMODATION AND RECOMMENDATIONS	11
IX. RECONNAISSANCE, GPS, SAFETY	13
X. SCRUTINEERING, SEALING AND MARKING	14
XI. TEST STAGE („SHAKEDOWN“)	15
XII. START PROCEDURE IN SPECIAL STAGE.....	15
XIII. ADDITIONAL EVENTS	16
XIV. INFORMATION FOR MEDIA.....	16
XV. CONTACTS OF SERVICES	16
XVI. USEFUL INFORMATION.....	17
XVII. APPENDIXES	19
Appendix 1 „Arrival links“	19
Appendix 2 „Scheme of the Service park places“.....	20
Appendix 3 „Rally center scheme“	22
Appendix 4 „Prohibited roads zones“	23
Appendix 5 „Spectators areas“	24
Appendix 6 „Reconnaissance schedule“	25
Appendix 7 „Itinerary card“	26
Appendix 8 „Accreditation form“	29



I. INVITE THE “RALLY ŽEMAITIJA 2017”

Comparing with 2016 „Rally Žemaitija“ this year will be some changes. First of all, changed the format, and instead of the three days rally will be held two days. The second important innovation - Rally cars park will be supplemented by participants of Lithuanian Rally Sprint Championship (LARSC) and historical cars group („History“). The event of LARSC together with "Rally Žemaitija" last time was carried out in 2015, and the "History" class, which is very popular in neighboring Latvia, will have a chance to debut in Žemaitija. As every year, we await arrival of guests from Latvia, Poland and the Nordic countries, and the estimated number of participants may be about 70 -80 crews.

Rally HQ will be located as last year in Kelme culture center. Service park will be located in the traditional place - Vytauto Didžiojo street, in the city center, and this year here are prepared more service places with larger area. What is more news, that this year, next to the Service park will not be installed refueling zone. Rally participants may use four refueling zones in the rally route: one of them will be at the entrance to the Kelme city, and the other which the crews will use thrice, will be located in Kražiai town.

All of stages surface - 100% gravel.

Friday, 16/06/2017

Early morning from 8:00 till 10:00 all rally participants must arrive to the Rally HQ to Administrative Checking. Immediately after its will begin reconnaissance with rally route, which will last till 19:00. Scrutineering, as every year, will be held in the company "Girilis“ Autoservice, Vytauto Didžiojo str.128 from 14:00 till 20:30 hrs.

From 19:00 will start almost 5 km length Test Stage ("Shakedown"), which will be carried out in the whole new section of the road. Start place surface - gravel, Service zone - Šalteniai village, located near from the start place. Action here will continue till 21:00. Exactly at this time will begin the first meeting of Stewards in the Rally HQ, after which the program of the first rally day will be completed.

Saturday, 17/06/2017

Section 1

On Saturday morning at 9:00 rally will start. Getting to the track begins from LARSC participants and historic cars, and an hour later at 10:00 the start podium overpassed LARC participants and other "Rally Žemaitija 2017" crews. The first section of the rally will consist of three different, up to 10 km long special stages.

The first of these for crews will be a novelty, because the last time was carried out in 2007, in addition to much shorter. This year we connected a completely new segment to this stage. Start on the asphalt, length - 8.4 km, one retarder in stage. Provided spectators area with good entrance and parking option, so we recommend everyone to begin observation of rally here. After that you can to get to SS4 or SS5 at own discretion.

SS2 - is abridged version of classical "Rally Žemaitija" stage, which is carried out almost every year. Start place surface - gravel, length of 7.8 km, safe zones for spectators is not in this stage.

SS3 is mix of various previous years stages. Start place surface - asphalt, length - 9.4 km. Episodically repeated the previous year stage, from 5.7 km is identical as one of last year's special stage. For audience this stage is not very convenient.



After the first section in Kelme Rally participants will have opportunity for cars washing and 30 minutes Service time. Here will be carried out full Regrouping with change of start positions, according to SS 1 - 3 results.

Section 2

The second section will begin 12:45. As well as the morning the first will start LARSC participants , following - "History" class, and 13:40 to the route will move LARC crews. In this section will be also three, only at the longer special stages.

SS4 is composed of various sections from the previous years carried out stages, but the most similar to this year, but not identical, took place a decade ago. Start place surface - gravel, length - 10.9 km. We recommend an excellent spectator area alongside the springboard and good access and parking facility in this stage. After that you have opportunity run over to the SS 7/9, and continue monitoring of the rally.

SS5 has long rally traditions in Žemaitija. Compared with last year, stage changed the configuration, with the reversed and new sections. Start is from the asphalt surface, stage length - 12.7 km, and one retarder in stage. Provided one excellent from the previous years memorable spectators area with good access and parking opportunity. At the end is possible timely to get to SS 7/9.

SS6 is shortened SS8 part. This stage is carried out the several of years, is also very popular and interesting. Start place is on the gravel, the length 14.0 km, one retarder. Here is provided traditional great spectators zone, but entrance / exit restricted from 13:00 to 19:00 hrs, so we recommend this stage for audience who want to migrate less and stay to watch the second ride during SS8.

After the second section all participants return to Kelmė, where this race ends LARSC participants, while others again will perform 30-minute service and will have 45 minutes time-break (sport's channel contraction).

Section 3

Third Rally section consists of three and the longest special stages therefore from this time the crews will start every two minutes. SS7/9 is 17.8 km length, and it is combination of two stages of last year. Start location - asphalt. For Rally fans is provided well-known and favorite spectators area, through which sportsmen will go twice, and watching here will really interesting and safe. Good access and parking. Arrival possible from SS4 or SS5, entering allowed till 16:00 hrs.

SS8, as already mentioned, is a longer SS6 version, and this year it is the only one completely identical to the 2016 "Rally Žemaitija" special stage. This time, the start will be from the asphalt surface, the stage length - 17.2 km, added one additional retarder and the same, as well as in SS6, spectators area.

After this stage "History" class participants will come to Kelmė and here 18:30 will finish the rally. LARC and other "Rally Žemaitija 2017" crews will appear on the finish podium 19:30 and then will be carried out finish scrutineering of some cars.

Awards will begin at 21:00 Kelme near the Kelme Culture Center, the first will be awarded LARSC and "History" crews, and 21:30 on the scene we will see all LARC prize winners.

TOTAL INFORMATION

SS No.	Distance	Start place	Comparison with 2016 year
SS 0	4,50 km	Gravel	New stage
SS 1	8,40 km	Asphalt	New stage
SS 2	7,80 km	Gravel	Identical part of one 2016 stage
SS 3	9,40 km	Asphalt	New stage till 5,7 km, onward identical part of one 2016 stage
SS 4	10,90 km	Gravel	New stage
SS 5	12,70 km	Asphalt	Modified SS 2016 with reverse and new sections
SS 6/8	14,00 km	Gravel	Identical part of one 2016 stage
SS 7/9	17,80 km	Asphalt	Mix of two stages 2016
SS 8	17,20 km	Asphalt	Identical one of 2016 stage

We invite all sportsmen, spectators and media representatives to attend in this traditional rally feast. We are waiting for you this year in June 16/17 days in Kelmė !



II. CONTACT INFORMATION

ADDRESS AND CONTACTS OF THE ORGANIZER:

The name: Association Kelmė Automobile Sports Club
 Address: Statybininkų str. 17. Kelmė
 Contacts: Mobil phone: +370 686 36522; +370 682 27744
 E-mail: info@kelmesask.lt

OFFICIALS OF THE RALLY

Duties	Name, Surname	Country	Phone number
Chairman of Stewards	Algirdas Bilevičius	Lietuva	+370 687 74241
Stewards:	Evaldas Torrau	Lietuva	+370 698 32313
	Šarūnas Liesis	Lietuva	+370 687 30116
Secretary of Stewards	Reneta Breivienė	Lietuva	+370 618 76683
Clerk of the Course	Mindaugas Račkauskas	Lietuva	+370 698 39401, rackis123@gmail.com
Deputy Clerk of the Course	Edvinas Vašteris	Lietuva	+370 612 50791, edvinas.rally@gmail.com
Chief Safety Officer	Tomas Savickas	Lietuva	+370 686 36522, info@kelmesask.lt
Deputy Chief Safety Officer	Vaidas Lapinskas	Lietuva	+370 610 26590
Chief Secretary	Rasa Jakienė	Lietuva	+370 686 85146
Chief Scrutineer	Saulius Stanaitis	Lietuva	+370 687 31023, saulius.stanaitis@gmail.com
Competitors Relations Officer	Remigijus Bilevičius	Lietuva	+370 671 62265, krosas.kaunas@gmail.com
Chief Doctor	Vidmantas Eigelis	Lietuva	+370 685 54153
Chief Timekeeper	Evaldas Vilimaitis	Lietuva	+370 620 73621
Rally Director	Ingrida Savickienė	Lietuva	+370 682 27744, kelmesask@gmail.com
Press Manager	Saulenis Pociūnas	Lietuva	+370 612 86613, saulenisp@gmail.com

RALLY HQ, PRESS CENTRE AND SERVICE

Date	Time	Location
RALLY HEADQUARTERS AND OFFICIAL NOTICE BOARD		
16-06-2017 (Friday)	8:00 – 22:00	Kelmė Culture centre, Vytauto Didžiojo str. 73, Kelmė Coordinates: N 55° 37' 55.0", E 22° 56' 9.0" Contacts: +370 698 39401 Rally control centre; +370 682 27744 Rally director; +370 686 85146 secretariat. During rally time all official documents will be published on the Official Notice Board in Rally HQ and on the Rally Website www.autorally.lt
17-06-2017 (Saturday)	7:00 – 22:00	
PRESS CENTRE		
17-06-2017 (Saturday)	9:00 – 21:30	Kelmės Culture centre, Vytauto Didžiojo str. 73, Kelmė Coordinates: N 55° 37' 55.0", E 22° 56' 9.0"
SERVICE PARK		
17-06-2017 (Saturday)	7:00 – 20:00	Alongside Kelmė Culture centre, Vytauto Didžiojo str., Kelmė Coordinates: from N 55° 37' 55.9", E 22° 56' 20.2" till N 55° 37' 50.9", E 22° 55' 59.2"

III. PROGRAM AND IMPORTANT DATES

Action	Date	Time	Place
Supplementary Regulations publication	08-05-2017 (Monday)	15:00	www.rallyzemaitija.lt , www.lasf.lt , www.autorally.lt
Entries open	08-05-2017 (Monday)	15:00	info@kelmesask.lt electronic entry form
Entries close	05-06-2017 (Friday)	17:00	
Entries (with the increased starting fee) close	09-06-2017 (Friday)	17:00	
Team entries open	08-05-2017 (Monday)	15:00	Send by e-mail info@kelmesask.lt and/ or Rally Headquarters till 16-06-2017 20:30 hrs.
Team entries close	16-06-2017 (Friday)	20:30	
Beginning of reservation schedule for administrative checks and scrutineering	08-05-2017 (Monday)	15:00	info@kelmesask.lt
Closing of reservation schedule for administrative checks and scrutineering	02-06-2017 (Friday)	17:00	
Preliminary start order publication	13-06-2017 (Tuesday)	15:00	www.rallyzemaitija.lt , www.lasf.lt , www.autorally.lt
Entries to participate in the Test stage („Shakedown“) open	08-05-2017 (Monday)	15:00	info@kelmesask.lt electronic entry form
Entries to participate in the Test stage („Shakedown“) close	09-06-2017 (Friday)	17:00	

16 – 06 - 2017 (Friday)		
Action	Time	Location
Hand-out of the Road books, stickers and GPS equipment <i>For crews, participating in the Test stage</i> <i>For crews, non- participating in Test stage</i>	8:00 – 8:40 8:40 – 10:00	Rally Headquarters
Reconnaissance	8:30 – 19:00	Special stages. Reconnaissance schedule specified in Appendix 6 of Rally guide 1.
Scrutineering, sealing and marking <i>For crews, participating in the Test stage</i> <i>For crews, non- participating in Test stage</i>	14:00 – 16:00 16:00 – 20:30	Company „Girilis“, Vytauto Didžiojo str. 128, Kelmė N55° 38' 8.3", E22° 56' 40.0"
Drives in the Test Stage („Shakedown“)	19:00 – 21:00	Šalteniai, Kelmė district.
Media representatives accreditation	17:00 – 20:00	Rally HQ. Look to Appendix 8.
Briefing for „O“ crews	18:00	Rally Headquarters
First Steward's meeting	21:00	Rally Headquarters
Publication of Start order and TEST stage („Shakedown“) results	21:30	Rally HQ and website www.autorally.lt

17 – 06 - 2017 (Saturday)		
Action	Time	Location
Media representatives accreditation	7:00 – 8:00	Rally HQ. Look to Appendix 8.
Start of the rally	9:00	TC 0, Kelme Little Theater Square, Laisvės gynėjų <i>square</i> 1, Kelmė 55° 37' 49.4", 22° 56'.6"
Time-off, Regrouping after 1st section	11:20 – 12:45	Vytauto Didžiojo str.– Laisvės gynėjų square crossroad, Kelmė N 55° 37' 50.2", E 22° 55' 57.4"
Finish of the rally: <i>LARSC classifications</i> <i>History classifications</i> <i>LARC classifications</i>	14:50–15:20 18:15–18:30 19:30–20:20	TC 9A, Kelme Little Theater Square, Laisvės gynėjų square 1, Kelmė N 55° 37' 49.4", E 22° 56'.6"
Scrutineering following rally finish	Just after finish	Company „Girilis“, Vytauto Didžiojo str. 128, Kelmė
Post-rally press conference	20:30	Rally Headquarters
Announcement of provisional results <i>LARSC classifications</i> <i>History classifications</i> <i>LARC classifications</i>	16:20 20:00 20:40	Rally Headquarters
Announcement of final results <i>LARSC classifications</i> <i>History classifications</i> <i>LARC classifications</i>	17:00 20:40 21:20	Rally Headquarters
Price awarding ceremony	21:00	Alongside Kelmė Culture centre, Vytauto Didžiojo str. 73, Kelmė

IV. CLASSIFICATIONS AND ENTRY FEES

4.1 Eligible vehicles.

4.1.1 Eligible vehicles in LARC(classifications, groups, classes):

LRC1, LRC2, LRC3, LRC4, LRC5, LRC6, LRC Junior, BMW Cup (LARC Regulations art. 3.1)

4.1.2 Eligible vehicles in LARSC(classifications, groups, classes):

SG1, SG2, SG3, SG4, OPEN, 2WD, 4x4, LARSC Junior (LARSC Regulations art. 5.1.1 – 5.2.2)

4.1.3 Participate in „Rally Žemaitija - 2017“ classifications are allowed all of the above mentioned cars, which will classified into groups 2WD or AWD. Sportsmen of foreign countries may take part in the rally with cars, which are in conformity to FIA homologation or national technical requirements.

4.1.4 Participate in „Histor“ classifications allowed the cars manufactured till 31-12-1995, which are in comply Technical regulations for Group national- historic cars (LH), which are published http://laf.lv/laf/wp-content/uploads/2010/09/Nacionalie_Tehniskie_noteikumi_Vesturiskajiem_LH_grupai_2017.pdf.

LARC and LARSC crews, which cars are in comply with Technical regulations for Group national-historic cars (LH), can also participate in "History" classification, paid additional 50 Eur fee.



4.2 Entry fees :

Entry fee	Till 02-06-2017 17:00	After 02-06-2017 17:00
LARC 1, 2 and 3 classifications	400 Eur	600 Eur
LARC 3, 4 and 5 classifications	300 Eur	450 Eur
BMW Cup and LARC 6 classifications	200 Eur	300 Eur
LARSC all classifications	200 Eur	300 Eur
„Rally Žemaitija 2017“ AWD classifications	400 Eur	600 Eur
„Rally Žemaitija 2017“ 2WD classifications	300 Eur	450 Eur
„History“ all classifications	250 Eur	375 Eur
LARC team entry fee	70 Eur	70 Eur
TEST stage entry fee	60 Eur	90 Eur

4.3 Entry form submission criterias

4.3.1 In the rally can take part all persons (1st and 2nd drivers), holding valid driving licenses which presented for organizer Entry form and paid Entry fee. LARC and „Rally Žemaitija 2017“ participants (1st and 2nd drivers), must have LASF or other parental ASN issued „D, DJ“ competitor's licenses , valid in this event. Persons younger 18 years old allowed take part in LARC only by decision of LASF Rally Committee. LARSC and „History“ participants (1st and 2nd drivers), must have LASF or other parental ASN issued „E, D, DJ“ competitor's licenses , valid in this event. Persons from 16 years old allowed participate as the 1st driver, and from 14 years old allowed take part as the 2nd driver. LARSC in the first driver position younger 18 years persons is able to participate in only one axle powered car, with engine capacity not exceeding 2000 cm³. The person who does not meet these requirements allowed take part in LARSC only by decision of LASF Rally Committee.

LARC and LARSC participants must submit "Lithuanian Automobile Rally Championship Entry form/ Lithuanian Automobile Rally Sprint Championship Entry form"

4.3.2 Maximum number of the participants is limited to 80 crews. Organizer has a right to change the number of maximum crews after informing in a separate bulletin.

V. SERVICE

5.1 SERVICE PARK A/B

Place: Vytauto Didžiojo street (from L.Giros street till Laisvės gynėjų square), Kelmė

From N 55° 37' 55.9", E 22° 56' 20.2" till N 55° 37' 50.9", E 22° 55' 59.2"

Date: 17-06-2017 (Saturday)

Time: 7:00 – 20:00

Surface: asphalt

Area assigned for one crew:

For each crew free assigned local service area till 60 sq.m. Wishing can reserve places of larger area , having paid an additional fee specified in Appendix 2 (Scheme of the Service park for places reservation).

Reservation will start from 08-05-2017 (Monday). Places for service can be booked only for crews, who submitted entry forms. Larger area places will be reserved only after payment of an additional fee, which is non-refundable, if the crew refused this place by the any other reason, except in cases of force majeure. Reservation closes 02-06-2017 (Friday) 17:00. After this term organizer will appoint places at this discretion.



Service park infrastructure:

- Possibility to choose a service area: available
- The availability of hot food: available
- Possibility for hanging tents and promotional material: available, if the pre-agreed with organizer
- Toilets: available (nearby Rally HQ) and bio toilets in the street
- Free Wi-Fi: available
- Electrical connection: not available
- Parking for trailers: separate, close to the Service park

5.2 Service requirements.

5.2.1 All rally time servicing of rally cars allowed only in the Service parks, specified in the Road Book according „T-2017“, art. 48-50. Entering to Service park A/B allowed from 7:00, 17-06-2017 (Saturday).

5.2.2 For each crew only one service car without trailer will be allowed into the Service park. Special sticker issued by the Organizer must be stucked on the service vehicle windscreen. Reconnaissance cars and representative cars will not be allowed to enter the Service park. **Please leave your trailers in the Organizer's specified place.**

5.2.3 Service zone for the participants of the Test stage will be installed in Šalteniai village, Kelmė district, before the start location. Surface – asphalt.

VI. TIRES AND FUEL

6.1 During the reconnaissance allowed use only certified for driving on public roads during the summer season tires, which are in conformity with Lithuanian Road Traffic law

6.2 During the rally allowed use only racing tires for gravel roads.

6.3 All participants are allowed to change tyres in the Service park A/B.

6.4 Refueling allowed only in the refueling zones according „T-2017“, art. 58.1-58.3.

6.5 Rally cars of every crew, using E 85 fuel – bioethanol, must be marked by special stickers (min. measurements: 160x120 mm), with note **E 85** must be written on blue background. Height of letters and the digits is 80 mm, symbol thicknes - 14 mm. Stickers must be stucked on car bodywork, above rear wheel arches – no further than 200 mm from top of the arch on both sides of the car.

VII. TICKETS AND PERMISSIONS

7.1 Tickets

Attention: Rally ticket price: 5 Euro per person. The tickets will be sold in Rally HQ on June 16 and in the SS access roads only on June 17. Test stage will be free for spectators.

Rally ticket valid for rally day and entitle the right to visit:

- All of the special stages;
- Awarding ceremony;
- Rally concert.

Permits will be granted only the:

- Organizer's authorized persons;
- Media representatives.

Rally tickets will be available for purchase in advance cheaper. About the pre-ticket sale will be announced soon. Follow the information!

VIII. HOTEL ACCOMMODATION AND RECOMMENDATIONS

- **“Kelme Tourism and Business Information Center”**, Birutės str. 4, LT-86163 Kelmė, phone +370 427 61430, fax +370 427 61417, e-mail: direktore@kelmevic.lt
- **Country tourism homestead „Marčio sodyba“**. Address: Žvilgiai village, Kelmė distr., phone +370 603 73763
- **Country tourism homestead „Kukečių sodyba“**. Address: Kukečių str. 40, Kukečiai, Kelmė distr., phone +370 603 73763
- **“Draugų slėnis“**
We offer a variety of herbal teas. You beautifully crafted banquet hall with bedrooms, bath.
Address: Paverpenis village., Kukečiai subdistr., Kelmė distr., phone: +370 694 27836
- **Country tourism homestead „Ažuolų slėnis“**
The farmstead is located in the territory of of the former manor - a remote area, near Kibirškštukas lake. You'll go the road Riga - Kaliningrad, in section Šiauliai - Kelmė between 81-82 km turn right and after driving about 100 meters (inform the stand). We offer 2-4 beds in rooms, a swimming pool.
Address: Targauskiai village, Kelmė distr., phone +370 687 32737, +370 655 69720, e-mail: azuolu.slenis@gmail.com, website: www.azuoluslenis.eu
- **Užvenčio malūnas**.
Address: Užventis, Kelmė distr., phone +370 682 14007 Alvydas, +370 682 14008 Milda, e-mail: uzvenciomalunas@gmail.com, website: www.uzvenciomalunas.lt
- **Country tourism homestead „Miego klinika“**
The farmstead is located in a Kurtuvėnai regional park. Residential house (4 rooms, 2 of them with fireplace, shower, toilet inside), a separate kitchen, living room with fireplace, TV, radio.
Address: Raudsparnė village. Kelmė distr., phone 8 612 22203, e-mail: info@miegoklinika.lt, website: www.miegoklinika.lt
- **„Miško vingis“**
Homestead is on the way Kelmė - Tytuvėnai before Bulavėnai sign (3 km from the main road).
Address: Bulavėnai village, Tytuvėnai subdistrict, Kelmė distr., phone +370 614 75086, +370 615 10542, e-mail: miskovingis@puslapiai.lt, website: miskovingis.lt
- **Country tourism homestead „5 Sezonas“**
Recreation complex consists of a main house and three separate cottages for family rest adapt. The main house has five rooms adapted for recreation with mini-kitchens and separate WC and shower in the basement - a Turkish bath, swimming pool with massage jets; pool table. Each room has a private terrace with outdoor furniture. Each house has a kitchen, lounge, toilet and shower. The homestead can accommodate 28 people. Address: Rėžaliai village, Tytuvėnai subdistrict, Kelmė distr., phone +370 611 16797, e-mail: info@5sezonas.lt, website: www.5sezonas.lt



➤ „Akmenukė“

From Šiauliai driving the old road towards Kelmė is rented farm, which is surrounded by several kilometers fear Pagėluvio, Dūkštas lakes and other water bodies. Very good access, 1 km from the old Kelmė road. **Address:** Kumpiškė village, Kukečiai subdistr., Kelmė distr., phone +370 685 60136, e-mail: akmenuke1@gmail.com, website: www.akmenuke.lt

➤ **Country tourism homestead "DRANGINĖ"**

Number of beds 30, homestead is 3 km from Kelmė. We provide accommodation services. There is a sauna, hot tub. **Address:** Verpena village, Kelmė distr., phone: +370 618 29956, +370 676 48247.

➤ **Tytuvėnų papartis**

Country tourism homestead „Tytuvėnų papartis“ is located alongside Gilius lake. Homestead is about 18 km away from Kelme . It can accommodate about 50 guests. **Address:** Tytuvėnai, Kelmė distr., Miško str. 9., phone +370 650 81860, +370 650 81861, e-mail: tytuvenupartis@gmail.com, website: www.tytuvenupartis.lt

➤ **Country tourism homestead „Karpynė“**

Reception: phone +370 650 77437, +370 428 70123, e-mail:: info@karpyne.lt, website:www.karpyne.lt **Address:** Karpynės strg. 2, Gabšiai village, Raseiniai distr., Lithuania

Geographically located in a very convenient location - right in the center of Lithuania, near the highway Vilnius-Klaipeda, in 173 km. When driving in the direction of Klaipeda – Vilnius, in 137 km. Homestead is 30 km away from Kelme. Can provide accommodation for 80 people.

Accommodation prices (breakfast included in the price):

Double Room	1 person	from 49 €
	2 person	from 55 €
Family triple Room with the site	2 person	from 64 €
	3 person	from 74 €
Luxe Room	1 person	from 58 €
	2 person	from 73 €
Villas rooms	1 person	from 60 €
	2 person	from 70 €
Cabins	2 – 5 person	47 – 102 €

➤ **Šiaulių krašto medžiotojų užėiga“ ******

Dubijos g. 20, Šiauliai

Tel. +370 41 524 526; Faks. +370 41 524 525

e-mail info@hoteluzeiga.lt, website www.hoteluzeiga.lt

Modern and comfortable hotel is located in the central part of town. Only a few minutes away to the city center. It's a great place not only to relax, but also for seminars, conferences and business meetings. The hotel is equipped a closed, video cameras secure parking, so easy to arrive by bus, by car or camper van. The hotel offers for guests comfort, excellent service, quite and pithy rest.



➤ **„Turnė“ *****

Rūdės g. 9, Šiauliai
Tel. +370 41 500150; +370 698 79513
Faks. +370 41 429238
e-mail hotel@turne.lt, website www.turne.lt

Single room – 29 €
Double room – 44 €
Tripple room – 52 €
Liukas/Luxe room – 58 €

Breakfast price is not included into the room price. The price for breakfast - 5 EUR extra for person.

The hotel is located in the city center. The hotel is near the railway and bus stations, banks, and shops. The hotel's restaurant offer a variety of European dishes. For comfort of the guests equipped a parking lot.

➤ **„Turnė svečių namai“ ****

Rokiškio 8a, Šiauliai
Mob. +370 698 79570
Faks. +370 41 522205

E-mail: sveciunamai@turne.lt
Website www.turne.lt

Single room – 12 €
Double room (for 1person) – 19 €
Doubleroom – 29 €
Trippleroom – 41 €

Breakfast price is not included into the room price. The price for breakfast - 3 EUR per person.

Our guest house is in the central part of the town. There are 3 single, 9 double and 5 triple standard rooms. Also we have one for disabled people. There is cable TV, free Wifi, shower and WC in every room.

➤ **„Šiauliai“ *****

Draugystės pr. 25, Šiauliai
Tel. +370 41 437333; Faks. +370 41 438339
e-mail info@hotelsiauliai
website www.hotelsiauliai.lt

Single room – 30 €
Double room – 29 – 58 €
Luxe room – 77 – 82 €

The hotel is situated in the centre of Šiauliai city which is the most convenient place for city visiting. Moreover, there are railway and bus stations near the hotel as well as the most important cultural institutions and banks. Through the windows of the hotel overlook the impressive panorama of the city including the Prisikėlimo (resurrection) square, renaissance architecture cathedral and the lake Talša.

IX. RECONNAISSANCE, GPS, SAFETY

9.1 Reconnaissance is compulsory for every crew. Only crews, participating in Shakedown, may recognise with this stage.

9.2 Reconnaissance shall be controlled by GPS (“Global Positioning System”) devices and Organizer’s authorized official persons.

9.3 The device must be in an easily visible place of the car during the reconnaissance, therefore Marshals or other Officials could identify it easily.



9.4 Reconnaissance with stages is allowed only 16-06-2017 (Friday) from 8:30 till 19:00 hrs.

Reconnaissance Schedule is available in Appendix 6 of this Guide and compulsory for each crew.

Each special stage must be driven **no more than 2 times**. Number of SS passage times will be controlled by Recce Marshals and GPS System Officers.

9.5 Participants must drive in such a way that no danger or inconvenience is caused to the people residing close to the Rally course during the reconnaissance. Driving in the opposite direction is strictly prohibited on the special stages. Speed limits in Lithuanian Republic are the following: in residential areas – 50 km/h; on unpaved roads in non-residential areas – 70 km/h; on paved roads outside residential areas – 90 km/h. It is prohibited to use anti-radars and radar detectors.

9.6 Reconnaissance vehicles.

Reconnaissance may be performed only by vehicles complying the requirements of 2017 Lithuanian Rally Sporting Regulations art.25.1. During receipt of the Road Book, the crew must indicate his recce vehicles, which will be used for reconnaissance, as well as all service and representative vehicles.

9.7 GPS safety and tracking system.

In special stages all of the crews safety will be ensured by safety and control GPS devices.

9.7.1 The procedure of issue and use of safety and tracking equipment.

In pursuance following Rally Regulations and to maintain safety, purpose receive notifications of risk , during administrative checks for each crew will be issued safety and control equipment that will have to be used by every crew during the reconnaissance and the rally time. Every competitor is responsible financially for the equipment during the reconnaissance and the Rally. **Every crew must pay 200 EUR deposit fee. The device and the deposit is returned Rally HQ 17-16-2017 (Saturday) till 21:00. In case of reverting faulty device or retention device till the specified time 200 Eur deposit not refundable. The device has to be installed into the rally car before Rally start or if crew takes part in Test stage – before it start.**

X. SCRUTINEERING, SEALING AND MARKING

Place: Company „Girilis“, Vytauto Didžiojo str. 128, Kelmė N 55° 38' 8.3", E 22° 56' 40.0"
Date: 16-06-2017 (Friday)

For crews, participating in the Test stage

Time: 14:00 – 16:00

For crews, non- participating in Test stage

Time: 16:00 – 20:30

10.2 During the pre-starting scrutineering participants or team members must present valid documents which will be specified in Supplementary Regulations.

10.3 The crew must affix competition numbers and Rally stickers on their cars before scrutineering. Competition numbers and Rally stickers will be issued during the administrative checks. Beforehand issue of start numbers and Rally stickers is available by pre-agreement with organizer.

10.4 FIA homologated FHR („Frontal Head Restraint“) system is compulsory for all LARC participants and recommended for others.

NOTE: Exact arrival schedule with appointment individual arrival times to administrative checking and pre-start scrutineering will be published together with the start order 13-06-2017 (Tuesday) 15:00 hrs. on websites www.rallyzemaitija.lt, www.lasf.lt, www.aurally.lt



XI. TEST STAGE („SHAKEDOWN“)

11.1 Test stage will be carried out 16-06-2017(Friday) from 19:00 till 21:00 hrs.

11.1.1 All drivers who wants to take part in the Test Stage, must it indicate in the electronic Entry Form, which must reach the Organizer no later than 09-06-2017 (Friday), 17:00 hrs.

11.1.2 Test Stage entry fee 60 Eur, if paid till 02-06-2017 (Friday). After this term payment - 90 Eur.

Test Stage will not carried out and full Test stage payment will be refunded, if the number of participants will be less ten. In all other cases, except force majeure the payment of Test Stage will not be refunded

11.1.3 Distance of the stage – 4.50 km, road cover – gravel. Test Stage (Shakedown) allowed to be driven no more 3 times for each crew.

11.1.4 The cars participating in Test stage must be conducted scrutineering. On the cars must be sticked Organizer's issued start numbers and rally advertising stickers. In the car must be fitted with GPS Safety and control equipment.

11.1.5 During Test stage any person in the car, who performs the second driver position, and is not included in the crew's Entry form, must present to the organizer signed consent form to take responsibility.

11.1.6 During Test stage all persons in the car must wear helmets, clothing and safety equipment compliant by LARC (LARSC) Regulations safety requirements.

11.1.7 Test stage service

Place: Šalteniai, Kelmė district

Date: 16-06-2017 (Friday)

Time: 18:00 – 21:00

Service and refuelling during the Test stage can be performed only in zones exactly specified in the Road Book. Surface of service zone - asphalt.

11.1.8 The crews, who suffered a crash or mechanical problems in the Test stage, **must inform** Chief Scrutineer Mr. Saulius Stanaitis, ph. +370 687 31023, and by his request deliver the car for repeated technical inspection.

XII. START PROCEDURE IN SPECIAL STAGE

In all Special Stages start will be executed by means of the electronic timing equipment. When 30 seconds are remaining to start, the crew is handed in the timecard. The electronic clock shows hours, minutes and seconds. When 5 seconds are remaining to start, five red lights will light up every second from one to five. Then these five lights are extinguished, and the crew must start.

In case when the crew start is correct, lights green and continues to light for 20 seconds. In case of premature start - display shows "FALSE" and shows the time, the crew brought forward the belonging start.

In case if electronic equipment is not installed or it is not functioning, the start procedure shall be carried out following the requirements of art. 37.3 of the 2017 Lithuanian Rally Sporting Regulations



(FIA General requirements art. 19.5.). Start marshal must inform the crew in case the start procedure is carried out without electronic equipment.

XIII. ADDITIONAL EVENTS

- Demonstrative slalom race in Kelme centre;
- Rally taxi - a unique opportunity to be in rally co-driver's chair with experienced rally driver.
- Open for audience Service park;
- Free celebratory concert after the rally finish.
- Sport clubs, entrants, their members and other physical or legal persons wishing to organize the VIP guest zone during „Rally Žemaitija 2017“, must obtain written consent from the Organizer.

XIV. INFORMATION FOR MEDIA

14.1 The press centre will be open during rally time:

Place: Kelmė Culture Centre, Vytauto Didžiojo str. 73, Kelmė N 55° 37' 55.0", E 22° 56' 9.0"
 Date: 17-06-2017 (Saturday) Time: 9:00 - 21:30

In the Press center journalists, photographers, video operators and team representatives will be available to:

- pick up the accreditations and stickers;
- make use of wireless internet access;
- have a personal workplace photo / video / audio and textual materials processing.

The decision on the accreditation is carried by the Organizer. Accreditation in the rally is free. Photographers and cameramen must work with Organizer issued PRESS vests, and must pay 20 Eur deposit. Computers and other equipment for media representatives is not conferred.

Note: Accreditation will be granted only for media representatives who submitted their pre-accreditation requests till 12-06-2017, Monday.

14.2 Post-rally press conference.

Place: Kelmė Culture Centre, Vytauto Didžiojo str. 73, Kelmė
 Date: 17-06-2017 (Saturday) Time: 20:30

XV. CONTACTS OF SERVICES

Emergency number: 112

Kelmė hospital: Nepriklausomybės str. 2, Kelmė, phone: +370-427-69200,
 reception phone: +370 427 69222, www.kelmesligonine.lt

Kelmė district Police Commissariat: Vytauto Didžiojo str. 62, Kelmė, phone: +370 427 57016



Technical assistance on the road, evacuators:

Company Altas assistance, Kelmė district, phone: 1810

Gintautas Kaušius, Kelmė, phone: +370 612 95754

Pharmacies in Kelmė:

Benu vaistinė, Nepriklausomybės str. 2, Kelmė, phone: +370 620 80609

Eurovaistinė, Vytauto Didžiojo str. 80, Kelmė, phone: +370 800 50005

Kooperacijos str. 41, Kelmė, phone: +370 800 50005

Camelia vaistinė, "Nemuno vaistinė", Birutės str. 7, Kelmė, phone: +370 427 61039

Vytauto Didžiojo str. 51, Kelmė, phone: +370 427 61045

Norfos vaistinė, S. Šilingo str. 5, Kelmė, phone: +370 650 40360

Pharmacies in Kražiai:

Kražių vaistinė, Dariaus ir Girėno str. 28, Kražiai, phone: +370 427 58291

Gintarinė vaistinė, Dariaus ir Girėno str. 35, Kražiai, phone: +370 427 58291

XVI. USEFUL INFORMATION

Lithuanian Timezone: UTC+2 (GMT+2) (Summertime: UTC+3 (GMT+3)).

Lithuanian currency: Eur.

Speed limits in Lithuania: In residential areas: 50 km/h;

In non-residential areas: on gravel roads – 70 km/h, on asphalt roads - 90 km/h.

The main mobile phone operators in Lithuania:

➤ „Bitė Lietuva“, Vytauto Didžiojo str. 49, Kelmė, www.bite.lt

➤ „Omnitel“, Vytauto Didžiojo str. 80, Kelmė, phone: +370 427 56070, www.omnitel.lt

➤ „TELE2“, Vytauto Didžiojo str. 49, Kelmė, phone: +370 607 99733, www.tele2.lt

Security Services in Kelmė:

➤ **Company „Norgauda“**, Kelmė subdivision, Kelmė, phone: +370 615 42419, www.norgauda.lt

➤ **„ARGUS“ Security Service, R.Jonaitis Company**, phone: **1858**, www.argus.lt

➤ **Company „KVINTENCIJA“** Security Service, Kelmė, phone: +370 698 18006, www.kvintencija.eu

Taxi services in Kelmė:

➤ **Taxi, K. Jucius Company**, Kelmė, phone: +370 639 00660

Insurance Companies:

➤ **Lietuvos draudimas, Kelmė subdivision**, Vytauto Didžiojo str. 84A, Kelmė, phone: **1828**

➤ **PZU Lietuva, Kelmė subdivision**, Vytauto Didžiojo str. 61, Kelmė, phone: **19019**



LIETUVOS
AUTOMOBILIŲ
SPORTO
FEDERACIJA



Feeding:

- | | |
|--|---------------------------------|
| ➤ Cafe „Vilbėnas“, Vytauto Didžiojo str. 51, Kelmė, ph.: +370 427 51565 | Working time: 10 -24 hrs |
| ➤ Cafe „Fragmentas“, Vytauto Didžiojo str. 80A, Kelmė, ph.: +370 699 56035 | Working time: 10 -22 hrs |
| ➤ Petrol station „Agrotech“, V. Putvinskio str. 37, Kelmė, ph.: +370 427 61094 | Working time: 8 - 19 hrs |
| ➤ Cafe “Šnekoriai”, Vytauto Didžiojo str. 64, Kelmė, ph.: +370 615 35717 | Working time: 10 -03 hrs |
| ➤ Cafe “Kelmynė”, Dariaus ir Girėno str. 13, Kelmė, ph.: +370 652 87569 | Working time: 10 -24 hrs |
| ➤ Cafe “Laukinukė”, Vargeniškė village, Kukečiai subdistr., ph.: +370 68788 | Working time: 10 -24 hrs |
| ➤ Cafe/bar “YOLO”, Vytauto Didžiojo str. 72, Kelmė, ph.: +370 603 65766 | Working time: 10 -24 hrs |

Weather prediction (Lithuanian Hydrometeorological Service): www.meteo.lt

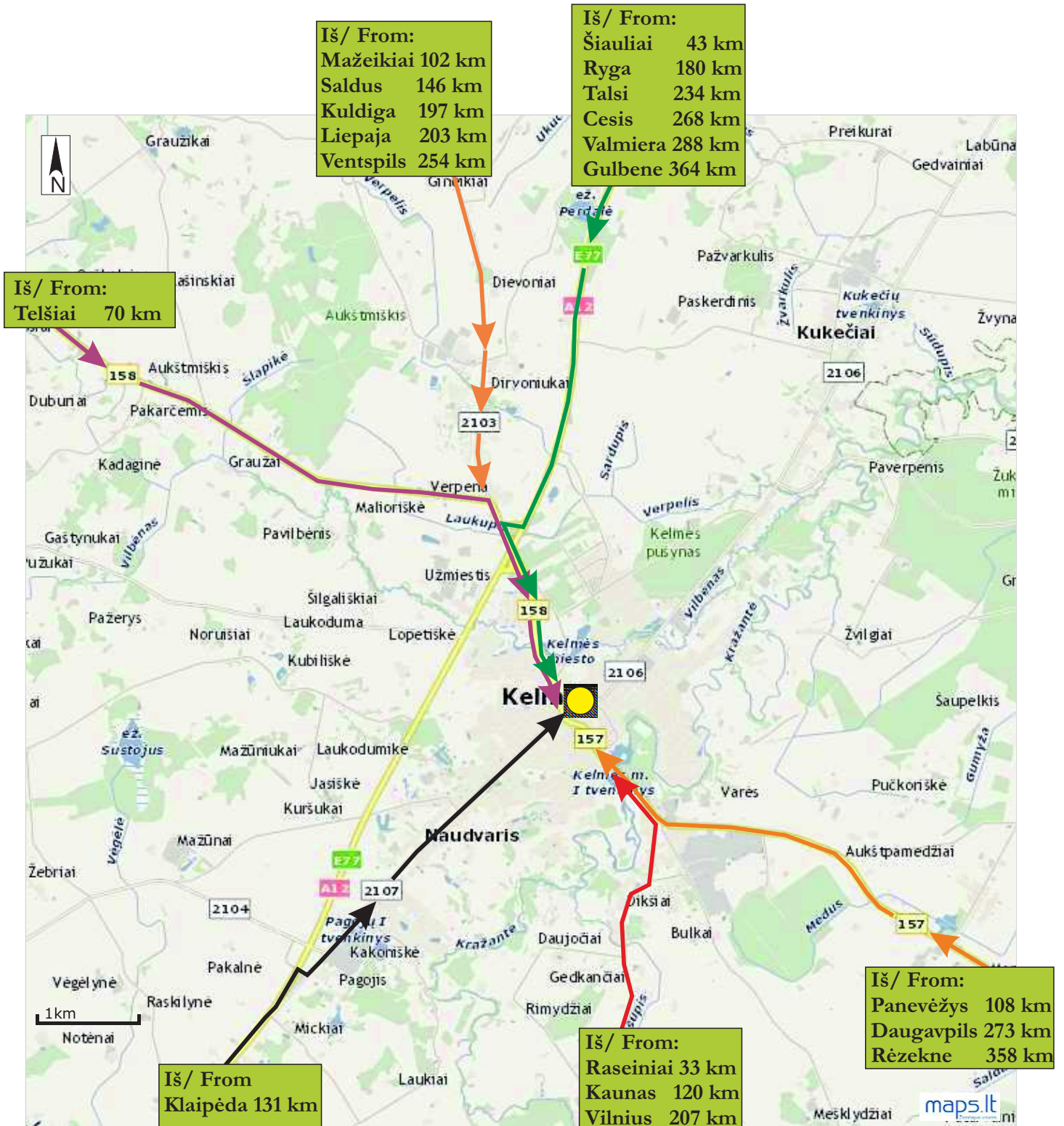
Maps on the web, addresses, place names, etc.: www.maps.lt

Rally results live (online and mobile application): www.autorally.lt

Kelmė district Turism information: www.kelmevic.lt

XVII. APPENDIXES

Appendix 1 „Arrival links“



Appendix 2 „Scheme of the Service park places“

Headquarters - Vytauto Didžiojo str. 73, Kelmė. Coordinates: N 55° 37' 55.0", E 22° 56' 9.0"

Service Park - Vytauto Didžiojo str., Kelmė. Coordinates: *from* N 55° 37' 55.9", E 22° 56' 20.2" *to* N 55° 37' 50.9", E 22° 55' 59.2"



Vietos nr./ Seat	Ilgis/ Length	Plotis/ Spread	Vietos plotas/ Extent	Vietos kaina/ Local Price
1 – 5	6 m	8 m	48 m ²	Nemokama/Free
6 – 10	6 m	9 m	54 m ²	Nemokama/Free
11 – 13	6 m	8 m	48 m ²	Nemokama/Free
14	10 m	5 m	50 m ²	Nemokama/Free
15 – 26	6 m	8 m	48 m ²	Nemokama/Free
27 – 33	10 m	8 m	80 m ²	50 €
34 – 35	13 m	6 m	78 m ²	50 €
36 – 37	10 m	5 m	50 m ²	Nemokama/Free
38 – 39	8 m	6 m	48 m ²	Nemokama/Free
40 – 41	5 m	9 m	45 m ²	Nemokama/Free
42	15 m	5 m	75 m ²	50 €
43	12 m (max)	10 m (max)	~ 90 m ²	50 €
44 – 53	6 m	8 m	48 m ²	Nemokama/Free
54 – 68	5 m	12 m	60 m ²	Nemokama/Free
69 – 72	15 m	8 m	120 m ²	100 €
73	15 m	5 m	75 m ²	50 €
74 – 76	15 m	8 m	120 m ²	100 €

Attention! Non-reserved places list will be published together with the list of participants. One crew reserve one place.

Appendix 3 „Rally center scheme“

Scrutineering - Vytauto Didžiojo str. 128, Kelmė. Coordinates: N 55° 38' 8.3", E 22° 56' 40.0"

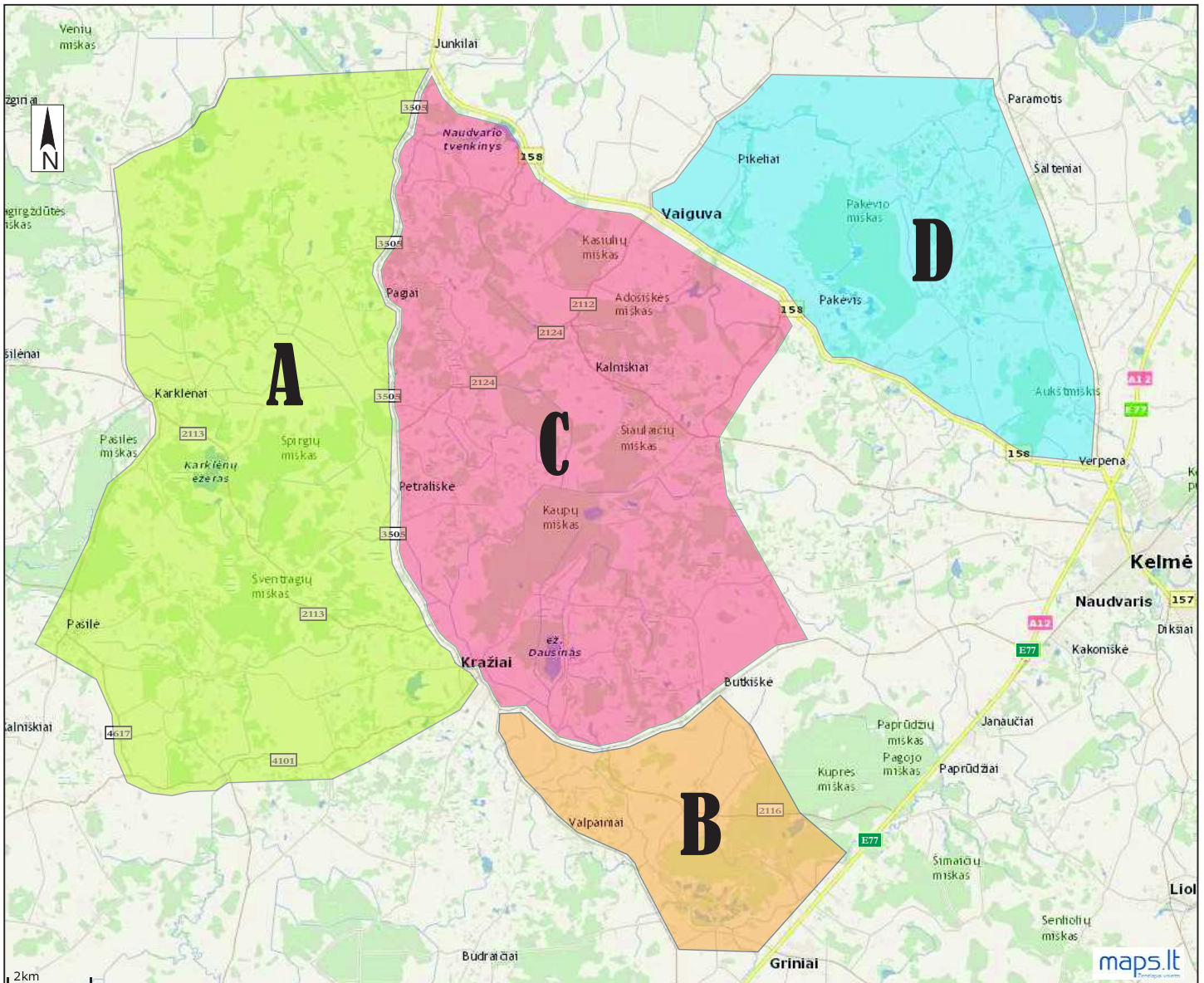
Area of cars downloading and trailers parking - Raseinių str. 1, Kelmė (entering from Birutės str.).

Coordinates: N 55° 37' 48.0", E 22° 56' 14.0"



Appendix 4 „Prohibited roads zones“

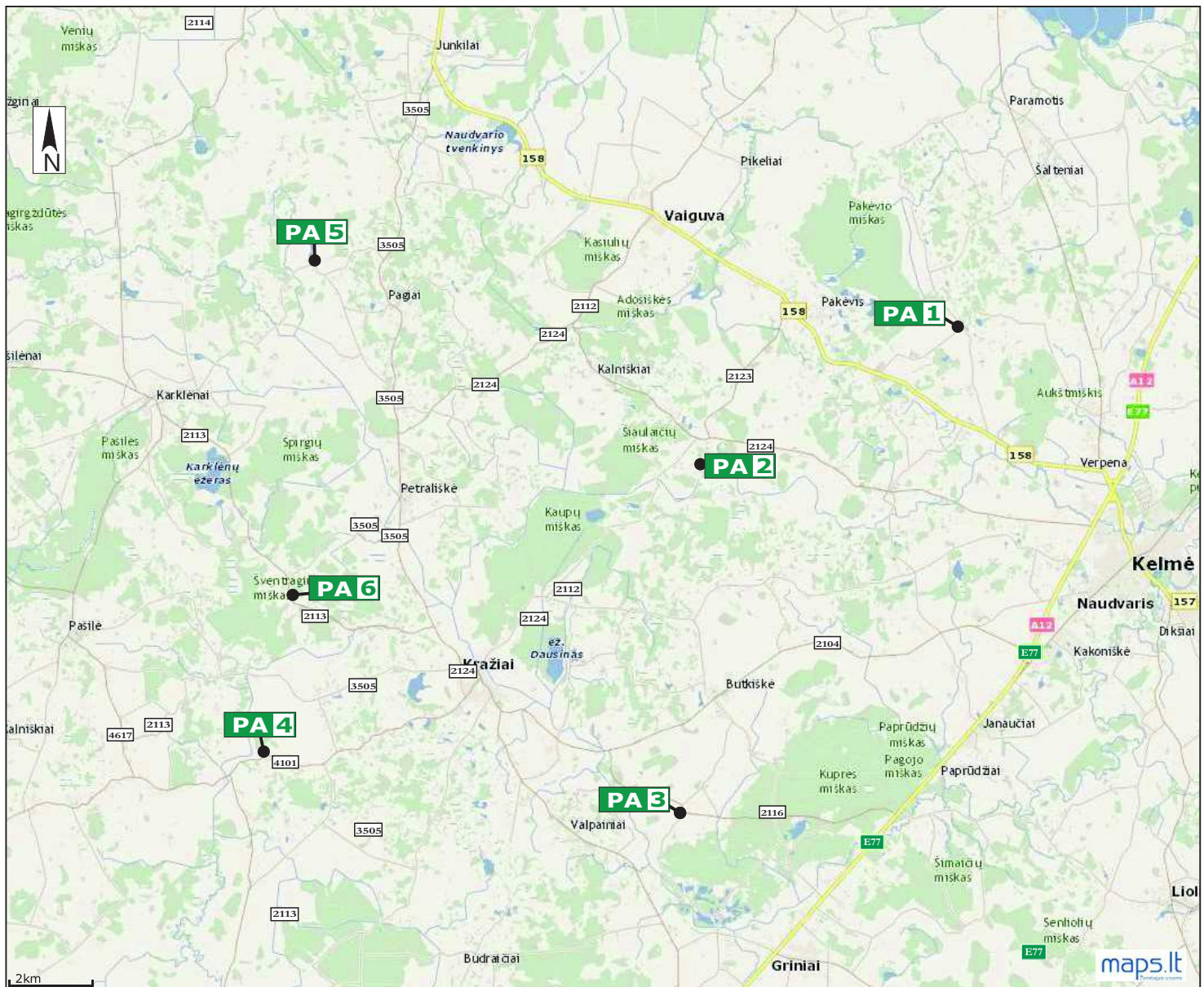
A – SS 6, SS 7-9 and SS 8; B – SS 5; C – SS 2, SS 3 and SS 4; D – SS 0 and SS 1.



All the first and second drivers intending or only having intentions to take part in LARC 2017, in LARSC 2017 or only in “Rally Žemaitija - 2017” shall be strictly prohibited entering to the roads marked in the Prohibited Entry Zones map **from 03-04-2017 (Monday) 15:00 till 16-06-2017 (Friday) 8:30 hrs.**

Named persons, willing to move/cross the roads marked as prohibited for entry, must communicate their intentions in writing in advance to the LASF and the Organizer and obtain permission from the Organizer.

Appendix 5 „Spectators areas“



Appendix 6 „Reconnaissance schedule“

	REKOMENDUOJAMAS/ RECOMMENDED					PRIVALOMAS MANDATORY
	km	km SS	min	Arrival time	Km/ h	Allowed time
HQ to SS 0 start	11,1		18	08:30	37,0	
SS 0		4,9	9	08:39	32,6	Nuo/ From 8:30
SS 0 finish to SS 1 start	2,1		4	08:43	31,5	
SS 0		4,9	9	08:52	32,6	Iki/ Till 10:00
SS 0 finish to SS 1 start	9,2		13	09:05	42,5	
Totals	22,4	9,8	53		36,5	
HQ to SS 1 start	3,4		5	09:05	40,8	
SS 1		8,4	15	09:20	33,6	Nuo/ From 9:00
SS 1 finish to SS 1 start	4,7		7	09:27	40,3	
SS 1		8,4	15	09:42	33,6	
SS 1 finish to SS 2 start	13,2		20	10:02	39,6	
SS 2		7,8	15	10:17	31,2	
SS 2 finish to SS 3 start	1,0		3	10:20	20,0	
SS 3		9,4	18	10:38	31,3	
SS 3 finish to SS 2 start	6,3		10	10:48	37,8	
SS 2		7,8	15	11:03	31,2	
SS 2 finish to SS 3 start	1,0		3	11:06	20,0	
SS 3		9,4	18	11:24	31,3	Iki/ Till 13:00
SS 3 finish to SS 4 start	9,5		16	11:40	35,6	
SS 4		10,9	20	12:00	32,7	Nuo/ From 11:30
SS 4 finish to Kelmė	16,5		25	12:25	39,6	
Pertrauka/ Lunch Break	55,6	62,1	03:25	13:10	34,5	
Kelmė to SS 4 start	12,6		20	13:30	37,8	
SS 4		10,9	20	13:50	32,7	Iki/ Till 15:30
SS 4 finish to SS 7/9 start	13,7		20	14:10	41,1	
SS 7/9		17,8	30	14:40	35,6	Nuo/ From 14:00
SS 7/9 finish to SS 7/9 start	9,2		15	14:55	36,8	
SS 7/9		17,8	30	15:25	35,6	
SS 7/9 finish to SS 6/8 start	2,1		5	15:30	25,2	
SS 6/8		17,2	30	16:00	34,4	
SS 6/8 finish to SS 6/8 start	2,3		5	16:05	27,6	
SS 6/8		17,2	30	16:35	34,4	
SS 6/8 finish to SS 5 start	8,6		13	16:48	39,7	
SS 5		12,7	22	17:10	34,6	
SS 5 finish to SS5 start	0,5		3	17:13	3,0	
SS 5		12,7	22	17:35	34,6	Iki/ Till 19:00
SS 5 finish to HQ	11,5		15		46,0	
Viso/ Totals : 284,5 km	116,1	168,4	08:05		35,2	

Appendix 7 „Itinerary card“

LARSC

Ratas 1 (Saulė teka 04:41, saulė leidžiasi 21:58)							Šeštadienis, 2017 06 17	
Leg 1 (Sunrise 04:41, Sunset 21:58)							Saturday, 17 06 2017	
LK/GR TC/ SS	LOCATION / VIETA	SS dist. GR dist.	Liaison Be GR	Total dist. Viso	Av. speed Vid. greitis	Time Laikas	1 aut 1st car	
0	Ralio startas/ Start of the rally (Kelmė 1)						09:00	
1			3,40	3,40	20,40	00:10	09:10	
SS 1 A		8,40					09:13	
2			13,20	21,60	54,00	00:24	09:37	
SS 2 B		7,80					09:40	
3			0,90	8,70	52,20	00:10	09:50	
SS 3 C		9,40					09:53	
RZ	Additional refuel 1	(25,60)	(34,20)	(59,80)				
1	Distance to next refuel zone	(23,60)	(28,00)	(51,60)				
3A	Kelmė 2		18,20	27,60	35,23	00:47	10:40	
3B	Service IN		0,50	0,50	3,00	00:10	10:50	
	Service A (Kelmė 1)	(25,60)	(36,20)	(61,80)		00:30		
3C	Service OUT/ Regroup IN						11:20	
	Pergrupavimas/ Regrouping 1 (Kelmė)						Naujas laikas/ New time	
3D	Regroup OUT						12:45	
4			13,50	13,50	36,80	00:22	13:07	
SS 4 D		10,90					13:10	
5			5,40	16,30	44,45	00:22	13:32	
SS 5 E		12,70					13:35	
RZ	Additional refuel 2	(23,60)	(28,00)	(51,60)				
2	Distance to finish	(14,00)	(26,85)	(40,85)				
6			11,10	23,80	44,62	00:32	14:07	
SS 6 F		14,00					14:10	
6A	Kelmė 3, Podium		22,70	36,70	48,80	00:45	14:55	
6C	UP/ PF IN		0,15	0,15	0,90	00:10	15:05	
	Totals/ Viso section2	37,60	52,85	90,45				
	Rally totals / Viso ralyje	63,20	89,05	152,25				

RALIO SUVESTINĖ / RALLY TOTALS						
Section	No. of SS	SS dist.	Liaison dist.	Total dist.	%*	
1	3	25,60	36,20	61,80	41,4%	
2	3	37,60	52,85	90,45	41,6%	
Overall Totals	6	63,20	89,05	152,25	41,5%	

* - The percentage of the total distance of special stages

HISTORY

Ratas 1 (Saulė teka 04:41, saulė leidžiasi 21:58)							Šeštadienis, 2017 06 17
Leg 1 (Sunrise 04:41, Sunset 21:58)							Saturday, 17 06 2017
LK/GR TC/SS	LOCATION / VIETA	SS dist. GR dist.	Liaison Be GR	Total dist. Viso	Av. speed Vid. greitis	Time Laikas	1 aut 1st car
0	Ralio startas/ Start of the rally (Kelmė 1)						09:25
1			3,40	3,40	20,40	00:10	09:35
SS 1	A	8,40					09:38
2			13,20	21,60	54,00	00:24	10:02
SS 2	B	7,80					10:05
3			0,90	8,70	52,20	00:10	10:15
SS 3	C	9,40					10:18
RZ	Additional refuel 1	(25,60)	(34,20)	(59,80)			
1	Distance to next refuel zone	(23,60)	(28,00)	(51,60)			
3A	Kelmė 2		18,20	27,60	35,23	00:47	11:05
3B	Service IN		0,50	0,50	3,00	00:10	11:15
	Service A (Kelmė 1)	(25,60)	(36,20)	(61,80)		00:30	
3C	Service OUT/ Regroup IN						11:45
	Pergrupavimas/ Regrouping 1 (Kelmė)			Naujas laikas/ New time			
3D	Regroup OUT						13:05
4			13,50	13,50	36,80	00:22	13:27
SS 4	D	10,90					13:30
5			5,40	16,30	44,45	00:22	13:52
SS 5	E	12,70					13:55
RZ	Additional refuel 2	(23,60)	(28,00)	(51,60)			
2	Distance to next refuel zone	(14,00)	(45,40)	(59,50)			
6			11,10	23,80	44,62	00:32	14:27
SS 6	F1	14,00					14:30
6A	Kelmė 3		22,70	36,70	48,93	00:45	15:15
6B	Service IN		0,50	0,50	3,00	00:10	15:25
	Service B (Kelmė 2)	(37,60)	(53,20)	(90,80)		00:30	
6C	Service OUT/ Regroup IN						15:55
	Pergrupavimas/ Regrouping 2 (Kelmė)			Naujas laikas/ New time			
6D	Regroup OUT						16:15
RZ	Additional refuel 3	(14,00)	(45,40)	(59,50)			
3	Distance to finish	(35,00)	(34,95)	(69,95)			
7			28,35	28,35	45,52	00:40	16:55
SS 7	G	17,80					16:58
8			2,05	19,85	49,63	00:24	17:22
SS 8	F2	17,20					17:25
9A	Kelmė 4, Podium		22,70	39,90	47,90	00:50	18:15
9B	UP/ PF IN		0,15	0,15	0,90	00:10	18:25
	Totals/ Viso section 3	35,00	53,25	88,25			
	Rally totals / Viso ralyje	98,20	142,65	240,85			

RALIO SUVESTINĖ / RALLY TOTALS						
History	Section	No. of SS	SS dist.	Liaison dist.	Total dist.	%*
	1	3	25,60	36,20	61,80	41,4%
	2	3	37,60	53,20	90,80	41,4%
	3	2	35,00	53,25	88,25	39,7%
	Overall Totals	8	98,20	142,65	240,85	40,8%

* - The percentage of the total distance of special stages

LARC

Ratas 1 (Saulė teka 04:41, saulė leidžiasi 21:58)							Šeštadienis, 2017 06 17	
Leg 1 (Sunrise 04:41, Sunset 21:58)							Saturday, 17 06 2017	
LK/GR TC/SS	LOCATION / VIETA	SS dist. GR dist.	Liaison Be GR	Total dist. Viso	Av. speed Vid. greitis	Time Laikas	1 aut 1st car	
0	Ralio startas/ Start of the rally (Kelmė 1)						10:00	
1			3,40	3,40	20,40	00:10	10:10	Seksija/ Section 1
SS 1 A		8,40					10:13	
2			13,20	21,60	54,00	00:24	10:37	
SS 2 B		7,80					10:40	
3			0,90	8,70	52,20	00:10	10:50	
SS 3 C		9,40					10:53	
RZ	Additional refuel 1	(25,60)	(34,20)	(59,80)				
1	Distance to next refuel zone	(23,60)	(28,00)	(51,60)				
3A	Kelmė 2		18,20	27,60	35,23	00:47	11:40	
3B	Service IN		0,50	0,50	3,00	00:10	11:50	
	Service A (Kelmė 1)	(25,60)	(36,20)	(61,80)		00:30		
3C	Service OUT/ Regroup IN						12:20	
	Pergrupavimas/ Regrouping 1 (Kelmė)						Naujas laikas/ New time	
3D	Regroup OUT						13:40	
4			13,50	13,50	36,80	00:22	14:02	Seksija/ Section 2
SS 4 D		10,90					14:05	
5			5,40	16,30	44,45	00:22	14:27	
SS 5 E		12,70					14:30	
RZ	Additional refuel 2	(23,60)	(28,00)	(51,60)				
2	Distance to next refuel zone	(14,00)	(45,50)	(59,50)				
6			11,10	23,80	44,62	00:32	15:02	
SS 6 F1		14,00					15:05	
6A	Kelmė 3		22,70	36,70	48,93	00:45	15:50	
6B	Service IN		0,50	0,50	3,00	00:10	16:00	
	Service B (Kelmė 2)	(37,60)	(53,20)	(90,80)		00:30		
6C	Service OUT/ Regroup IN						16:30	
	Pergrupavimas/ Regrouping 2 (Kelmė)						Naujas laikas/ New time	
6D	Regroup OUT						16:50	
RZ	Additional refuel 3	(14,00)	(45,50)	(59,50)				
3	Distance to next refuel zone	(35,00)	(13,70)	(48,70)				
7			28,35	28,35	45,52	00:40	17:30	Seksija/ Section 3
SS 7 G1		17,80					17:33	
8			2,05	19,85	49,63	00:24	17:57	
SS 8 F2		17,20					18:00	
RZ	Additional refuel 3	(35,00)	(13,70)	(48,70)				
3	Distance to finish	(17,80)	(33,90)	(51,70)				
9			11,65	28,85	46,78	00:37	18:37	
SS 9 G2		17,80					18:40	
9A	Kelmė 4, Podium		23,70	41,50	49,80	00:50	19:30	
9B	UP/ PF IN		0,15	0,15	0,90	00:10	19:40	
	Totals/ Viso section 3	52,80	65,90	118,70				
	Rally totals / Viso ralyje	116,00	155,30	271,30				

RALIO SUVESTINĖ / RALLY TOTALS						
LARC	Section	No. of SS	SS dist.	Liaison dist.	Total dist.	%*
	1	3	25,60	36,20	61,80	41,4%
	2	3	37,60	53,20	90,80	41,4%
	3	3	52,80	65,90	118,70	44,5%
	Overall Totals	9	116,00	155,30	271,30	42,8%

* - The percentage of the total distance of special stages

Appendix 8 „Accreditation form“
„RALLY ŽEMAITIJA – 2017“

2017 m. LIETUVOS AUTOMOBILIŲ RALIO ČEMPIONATO III ETAPAS
2017 m. LIETUVOS AUTOMOBILIŲ RALIO SPINTO ČEMPIONATO II ETAPAS
3rd Event of 2017 Lithuanian Automobile Rally Championship
2nd Event of 2017 Lithuanian Automobile Rally Sprint Championship

**INFORMACIJA ŽINIASKLAIDOS ATSTOVAMS IR AKREDITACIJOS PARAIŠKA
INFORMATION TO MEDIA AND ACCREDITATION FORM**

VARDAS, PAVARDĖ NAME, SURNAME		Gimimo data Date of birth	
Adresas/ Address		Miestas, šalis City, Country	
Kontaktai/ Contacts	Mobiliojo tel. nr. Mobile phone No.	El. paštas e-mail	
		Interneto tinklapis Website	

Atstovaujamos masinės informacijos įstaigos pavadinimas Represented mass media institution:			
Adresas/ Address			
Kontaktai/ Contacts	Telefono nr. Phone No.		
	El. Paštas e-mail		
	Interneto tinklapis/ Website		
Nurodykite, kur bus galima susipažinti su Jūsų foto/ video ar kt. „Rally Žemaitija 2017“ medžiaga (interneto tinklalapis, leidinio pavadinimas ar kt.) Choosing where will be able to find your photos / videos / etc. "Rally Žemaitija 2017" material (website, title, etc.)			

Pateikdamas šią paraišką garantuoju, kad visi pateikti duomenys yra teisingi, su pateikta informacija dėl rizikos ir saugumo reikalavimų automobilių sporto varžybose susipažinau.

Nereikšiu LASF bei Organizatoriui jokių pretenzijų ir pats prisiimu pilną atsakomybę, jei nukentėčiau „Rally Žemaitija 2017“ metu. Naudosiu tik oficialią informaciją, gautą iš ralio atstovo spaudai.

In submitting this application ensure that all the data are correct, with the information on the risks and safety requirements of automobile sports competitions acquainted.

I will not have any claims to LASF and the Organizer and assume full responsibility for myself suffer harm during the " Rally Žemaitija 2017". I will use only the official information received from Rally Press Centre Manager.

.....
Data/Date

.....
Vardas, pavardė/ Name, surname

.....
Parašas / Signature

ACCREDITATION CONDITIONS AND RULES

1. The Pre-accreditation form (Appendix 13 of Supplementary Regulations) published from 08-05-2017 on the official websites: www.rallyzemaitija.lt, www.lasf.lt, www.autorally.lt
2. Filled Pre-accreditation form must be sent by e-mail: info@kelmesask.lt till **12-06-2017, 17:00**.
3. The original filled and signed accreditation form must be submitted to Organizers of „Rally Žemaitija 2017“ by getting the accreditation cards.
4. Decisions regarding the mass media (hereinafter referred to as MM) accreditation makes Rally Organizers, after receiving the filled Pre-accreditation form of MM representatives.
5. **Accreditation of media representatives will be held in Rally HQ, Vytauto Didžiojo str. 73, Kelmė (Kelmė Culture centre): 16-06-2017 from 17:00 till 20:00; 17-06-2016 from 7:00 till 8:00.**
6. For accredited journalists, photographers and cameramen will be issued accreditation certificates and rally stickers on the car. There will also be given basic information about this rally.

Rally Press Centre Manager – Mr. Saulenis Pociūnas , mob.phone +370 612 86613

7. Persons, which have been issued accreditation certificate, during the rally can watch, to film, photograph competitions for free, in accordance with Safety requirements.
8. Accredited persons must wear Organizer issued blue vests with number. By acquiring the vest is mandatory to pay 20 EUR deposit which will be refunded by returning the vest.

SAFETY REQUIREMENTS

1. By working during the race you must be especially careful. Only on your own depends your security - it is valid all over the racetrack, service parks, etc.
2. You must unconditionally obey of the safety marshals and of the official persons claims. The Organizer has the right without notice cancel the rally accreditation for violators of this rules.
3. During the race, you have to wear "PRESS" vests, which are issuing only for the photographers and cameramen during accreditation. These vests and accreditation card is valid permission to take photos and record videos during rally time outside from the boundaries of Spectators zone, but not more than 2 meters away from the safety tape, and in any case - just in a safe place. We recommend a symbol "Media" marked areas. **Every person who entered into the danger zone, is responsible for their own safety, health and life.**
4. Take with himself only the currently necessary equipment.
CAUTION! Recorded photo/ video moments review only in a safe place outside the race track.
5. Do not stay too close to the race cars. Leave enough space for service personnel. Keep in mind that some parts of the car may be very hot. Always keep a safe distance from the race cars, because the car can suddenly and unexpectedly move from the place.
6. Be especially careful when working near the race track or in service parks. Always watch out for the nearby vehicles, because from racing car seceded part may injure.
7. Filming and the shooting locations select in advance, until the start of the special stage.
8. Any exit to the race track during the rally or walking across the road is strictly prohibited (except the Organizer provided catwalks, with security guard, which responsible for the crossing, permission).
9. Never stand near an ambulance, fire brigades, evacuation, marshals cars. In case of emergency, these vehicles will move very quickly and without any prior notice.
10. In the start or service zones please be only for a time, for as long as necessary to perform your job.